

# TOTS REGISTRATION 2010

STUDENT'S NAME: \_\_\_\_\_

AGE: \_\_\_\_\_ **AGES 4-6 MUST WEAR HELMETS**

PARENT(S) NAME: \_\_\_\_\_

ADDRESS: \_\_\_\_\_

CITY/STATE/ZIP: \_\_\_\_\_

PHONE: \_\_\_\_\_

EMAIL: \_\_\_\_\_

PLEASE CIRCLE SESSION

3                      4                      5

PLEASE CIRCLE DAY

Thursday                      Friday

PLEASE CIRCLE LEVEL

TOT 1                      TOT 2                      TOT 3

TOT 4                      Pre - Alpha

### HOLD HARMLESS AGREEMENT

Having full knowledge and understanding of the nature of this activity and the hazards involved, I hereby certify that I have personal Medical Insurance coverage for any "bodily injury" that may occur and assume full responsibility for all losses and injuries sustained while involved in this activity as it relates to this facility. I also hold harmless ICE LINE, its insurers, their agents, representatives, and employees and any of its associates from any claim related thereto.

Parent Signature \_\_\_\_\_

Print Name \_\_\_\_\_

Relation to Player \_\_\_\_\_ Date \_\_\_\_\_

## ICE LINE SKATE SCHOOL

### TOTS

Our Tots group lesson program teaches the Fundamentals of Ice Skating.

Whether your student wants to skate for recreation, hockey or figure skating, SKATE SCHOOL is their first step.

Each level is designed to meet their age, ability and goals.

### 6 week session includes:

- ★ Six 30 minute skating lessons
- ★ Six 30 minute practice sessions before or after lesson
- ★ Skate rental
- ★ Report card
- ★ Level completion badge\*  
\*Must pass level test in order to receive badge

**AGES 4-6  
MUST WEAR HELMETS!!!**



### Class Levels:

**TOT 1-** For the true beginner tot; class will focus on getting up, standing and marching.

**TOT 2-** This class teaches ice skating using rocking horse, swizzles and forward glides.

**TOT 3-** Class advances skating with stroking, snow-plow stops and dips.

**TOT 4-** Now that the students can skate and stop they will learn to glide with strength and skate backwards.

**Pre-Alpha-** Class will focus on advanced glides, swizzles and dips.

## Session Schedule:

### Thursdays

**10:00-11:00AM\***

#### Session 3:

1/28, 2/4, 2/11, 2/18, 2/25, 3/4

#### Session 4:

3/11, 3/18, 3/25, 4/1, 4/15, 4/22

#### Session 5:

4/29, 5/6, 5/13, 5/20, 6/3, 6/10

No Classes 4/8 or 5/27

### Fridays

**1:00-2:00PM\***

#### Session 3:

1/29, 2/5, 2/12, 2/19, 2/26, 3/5

#### Session 4:

3/12, 3/19, 3/26, 4/2, 4/16, 4/23

#### Session 5

4/30, 5/7, 5/14, 5/21, 6/4, 6/11

No Classes 4/9 or 5/28

### Cost:

**\$125.00 per session**

**Due to limited class size there are no make up classes or pro-rate discounts.**

### Questions?

Contact Front Office

610-436-9670 x 0

office@iceline.info

**Get Involved in our other  
SKATE SCHOOL Programs**

**CROSS ICE**

Designed for ages 4-8 this program teaches the youth player basic individual skills and team play. Our main goal is to get the kids on the ice, teach them the basic skills of hockey

and to have lots of fun

Classes are offered on

Saturdays from 11:45 AM - 12:45 PM

**HOCKEY CLASS**

Learn to skate for hockey or brush up on your hockey skating skills.

AGES 5-ADULT

Saturdays 10:45-11:15am

**Group Lessons**

Learn to skate for recreation or figure skating.

For ages 5-adult.

Saturdays 1-2pm

Pick up a registration at Ice Line's front office.

***PRIVATE LESSONS***

*Take your skating to the next level. For private instruction with hockey or figure skating please*

*contact us for our recommended coaches:*

*610-436-9670 office@iceline.info*

ICE LINE  
700 Lawrence Drive  
West Chester, PA 19380



**ICE LINE**

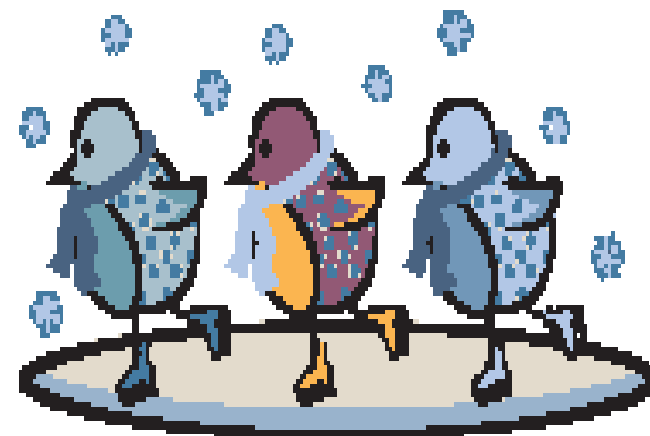
**SKATE  
SCHOOL**

presents

**TOTS**

ISI Group Lessons

AGES: 4-6



2010 Season

ICE LINE  
700 Lawrence Drive  
West Chester, PA 19380  
610-436-9670  
Fax: 610-436-4622  
www.iceline.info